

TerraStop® Paving Fabric

Polyester Non Woven Continuous Filament Geotextile

Mechanical Properties	Test Method	Units	TS-P1	TS-P2
Wide Strip Tensile	AS3706.2 (A)	kN/m	>7.0	>11.0
Trapezoidal Tear Strength	AS3706.3	N	>230	>320
CBR Puncture Strength	AS3706.4	N	>1400	>2300
G-Rating	Austrroads		>1100	>1500
Hydraulic Properties				
Bitumen retention (Loaded)	ASTM D6140-00	l/m ²	>1.0	>1.1
Physical Properties				
Mass	AS3706.1	g/m ²	>135	>180
Thickness	AS3706.1	mm	>1.1	>1.7
Melting Point	ASTM D276-00a	°C	>250	>250
Roll Size		m	Width 3 - 4.4m Length 100 - 450m	

INSTALLATION GUIDELINES

Typical procedure:

1. Prepare surface. Cracks wider than 5mm should be filled with rubberised bitumen. Larger holes and cracks should be patched with suitable slurry. Damaged or rutted pavement should be removed or repaired to ensure adequate bonding between the existing pavement and the paving fabric. Dirt, water, grease and loose material should be removed
2. Placement of adequate tack coat evenly distributed.
3. Installation of the TerraStop® Paving Fabric by experienced operator using purpose built dispenser attached to loader, multi-wheel roller or similar plant to ensure wrinkle free placement. Wrinkles >25mm should be removed by cutting. Joins should be butted or overlapped 150mm. If overlapped additional bitumen is required.
4. To assure adequate bonding, the paving fabric is rolled with 4 passes using a multi-wheel roller.
5. The TerraStop® Paving Fabric is ready for the wearing surface, that is, chip seal or asphaltic concrete overlay.

In the case of:

- Chip seal, a predetermined binder coat of bitumen is placed followed by the chip.
- Asphaltic concrete, it is placed directly on the Paving Fabric.

PURPOSE BUILT DISPENSER

Installation of TerraStop® Paving Fabric is carried out using a purpose built dispenser. Its designed to be used as an attachment to a front end loader/backhoe/multi-tyre roller or similar equipment when laying TerraStop® Paving Fabric.

Dispenser is attached to front end loader or backhoe as per cross section detail and held/secured in position by chains.

The dispenser consists of a steel frame holding a steel mandrel pipe that hold the paving fabric roll and allows free rotation and an adjustable rubber squeegee to force the paving fabric into the tacky Bitumen and to minimise creases. In the middle of dispenser is a free turning roller for applying tension to the paving fabric.

The roll can be placed to unwind either:

1. Clockwise - Feed paving fabric over roller and under squeegee.
2. Anti clockwise direction- Feed paving fabric directly under squeegee.

Additional tension on the paving fabric can be applied by tilting frame upwards so that roll is against the free rotating roller.

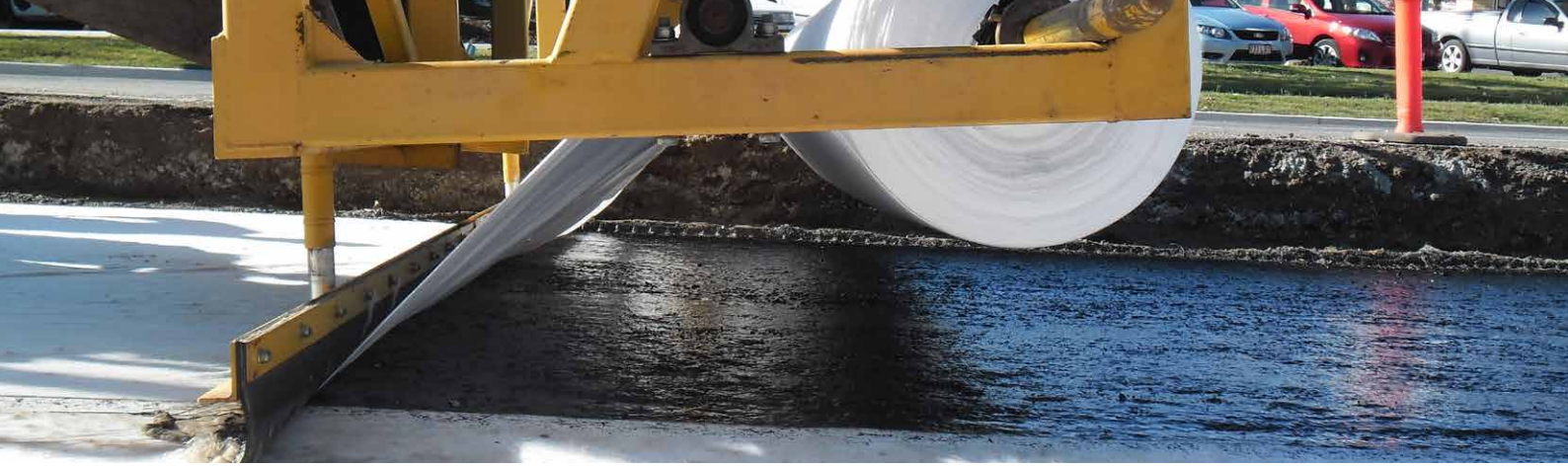
Consult Polyfabrics Australasia or a certified Engineer for site specific installation instructions. Polyfabrics Australasia reserves the right to change its product specification at any time. It is the responsibility of the specifier and purchaser to ensure that product specifications used for design and procurement purposes are current and consistent with the products used in each instance.

DISTRIBUTED BY

Polyfabrics
AUSTRALASIA

Reliability
you can
build on

Polyfabrics Australasia Pty Ltd | polyfabrics.com.au | sales@polyfabrics.com.au



TerraStop® Paving Fabric

Polyester Non Woven Continuous Filament Geotextile

TERRASTOP PAVING FABRICS USED TO REINFORCE CHIP SEALS

TerraStop Paving Fabric TS-P1 and TS-P2 are made from Polyester spun bonded continuous fibres, mechanically bonded by needle punching; They are specifically manufactured for pavement application such as spray sealing and asphalt resurfacing. All rolls come in continuous lengths up to 450m to minimise installation delays and plastic cores to avoid collapse due to handling and moisture.

SOFT OR CLAY PAVEMENTS. TYPICAL SEQUENCES OF EVENTS ARE:

- Prepare surface. Cracks wider than 5mm should be filled with rubberised bitumen. Larger holes and cracks should be patched with suitable slurry.
- Damaged or rutted pavement should be removed or repaired to ensure adequate bonding between the existing pavement and the paving fabric.
- Dirt, water, grease and loose material should be removed.
- Placement of adequate tack coat evenly distributed.
- Installation of the TerraStop Paving Fabric by experienced operator using purpose built dispenser attached to loader, multi-wheel roller or similar plant to ensure wrinkle free placement. Wrinkles >25mm should be removed by cutting. Joins should be butted or overlapped 150mm. If overlapped additional bitumen is required.
- Paving fabric is rolled with 4 passes using a multi-wheel roller.
- Chip seal or asphaltic concrete overlay is placed. In the case of the chip seal, a predetermined binder coat of bitumen is placed followed by the chip seal. For Asphaltic concrete, it is placed directly on the Paving Fabric.



Consult Polyfabrics Australasia or a certified Engineer for site specific installation instructions. Polyfabrics Australasia reserves the right to change its product specification at any time. It is the responsibility of the specifier and purchaser to ensure that product specifications used for design and procurement purposes are current and consistent with the products used in each instance.

DISTRIBUTED BY

Polyfabrics
AUSTRALASIA

Reliability
you can
build on

Polyfabrics Australasia Pty Ltd | polyfabrics.com.au | sales@polyfabrics.com.au